

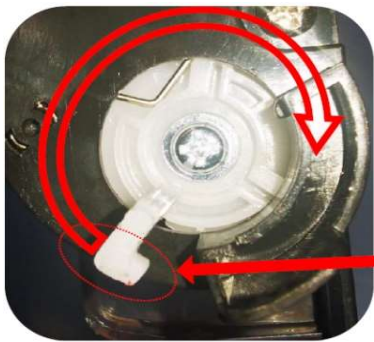
# Counting Gear Rest Instruction

For use with Compatible Brother TN360 Jumbo Yield Toner Cartridge

The standard Brother TN360 High Yield toner cartridge is est. 2,600 page yield @ 5% text print coverage. You are required to rest the counter gear once the toner low indicator warning starts to display on the printer.

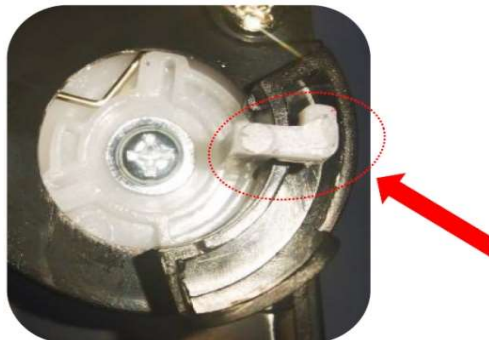
## Counter gear rest

1. Remove the toner cartridge from the printer.
2. Push the white gear protrusion clockwise following below instruction. See Picture -01
3. Once the white gear reaches its default position the cartridge is now ready for another 2,600 pages. See Picture -02



Picture -01

Push the white gear protrusion clockwise



Picture - 02

Once the white gear reaches its default position the gear reset is now completed.